

**Dr Sabine Nolte, Sarah Freeman,
Elaine Boyd, Lesley Armstrong,**
NHS Education for Scotland



The Scottish Infection Prevention and Control Education Pathway (SIPCEP) provides a national approach to infection prevention and control.

The Foundation Layer of the pathway consists of 15 e-learning modules and other resources covering mainly Standard Infection Control Precautions.

1. Introduction

Infection prevention and control is crucial to patient safety. Wherever care is delivered in Scotland, in hospital, in a care home or at home, those delivering care must have knowledge and skills to prevent the spread of infection and antimicrobial resistance.

With the move towards the integration of health and social and delivering of more care at home, the learning requirements are changing in health and social care. This highlighted the need to create a new contemporary Scottish Infection Prevention and Control Education Pathway, more suitable for a wider audience, spanning from novice to expert.

2. The pathway layers

The learning resources are organised into three layers:

- Foundation:**
Learn about and update your knowledge of the 10 **Standard Infection Control Precautions** and other introductory infection prevention and control (IPC) topics.
- Intermediate:**
Select resources from a wide variety of topics and delivery formats. Focuses on the **application of knowledge** across a range of **clinical/practical, interpersonal, leadership, decision making and clinical reasoning skills**.
- Improvement:**
Tools and resources to support your development in **quality improvement relating to infection prevention and control** through real life case studies. Move on to lead or actively participate in an IPC improvement project.

3. Aims

- Enable all Scottish health and social care staff and students to continuously improve their knowledge and skills around infection prevention and control as part of their role.
- Provide flexible access to resources for all.
- Align content with the National Infection Prevention and Control Manual.

4. How did we do it? The Foundation Layer

Close collaboration with stakeholders from all care settings:

- Strategy workshops
- Focus groups
- Content planning groups (15 foundation layer modules)
- Piloting groups

The project is governed by the SIPCEP Advisory Group. Content plans were created using an Action Mapping approach, which focusses on job tasks. HAI Education Leads identified critical elements and common areas staff find most challenging in practice for each Standard Infection Control Precaution, to be addressed in the content using scenario-based learning.

Modules, videos, learning aids, etc, on:

- Why Infection Prevention and Control Matters
- Breaking the Chain of Infection
- Patient Placement/Assessment for Infection Risk
- Hand Hygiene
- Respiratory and Cough Hygiene
- Personal Protective Equipment (PPE)
- Safe Management of Care Equipment
- Safe Management of Care Environment
- Safe Management of Linen
- Safe Management of Blood and Body Fluid Spillages
- Safe Disposal of Waste (including sharps)
- Prevention and Management of Occupational Exposure (including sharps)
- Prevention and Control of Infection – Clostridium difficile
- Infection prevention and control refresher for clinical staff
- Infection prevention and control refresher for non-clinical staff



5. Implementation – First year progress

Launched at the NHSScotland event in June 2017. Uptake across a wide range of staff and student groups.

>50,000
users enrolled in the first year

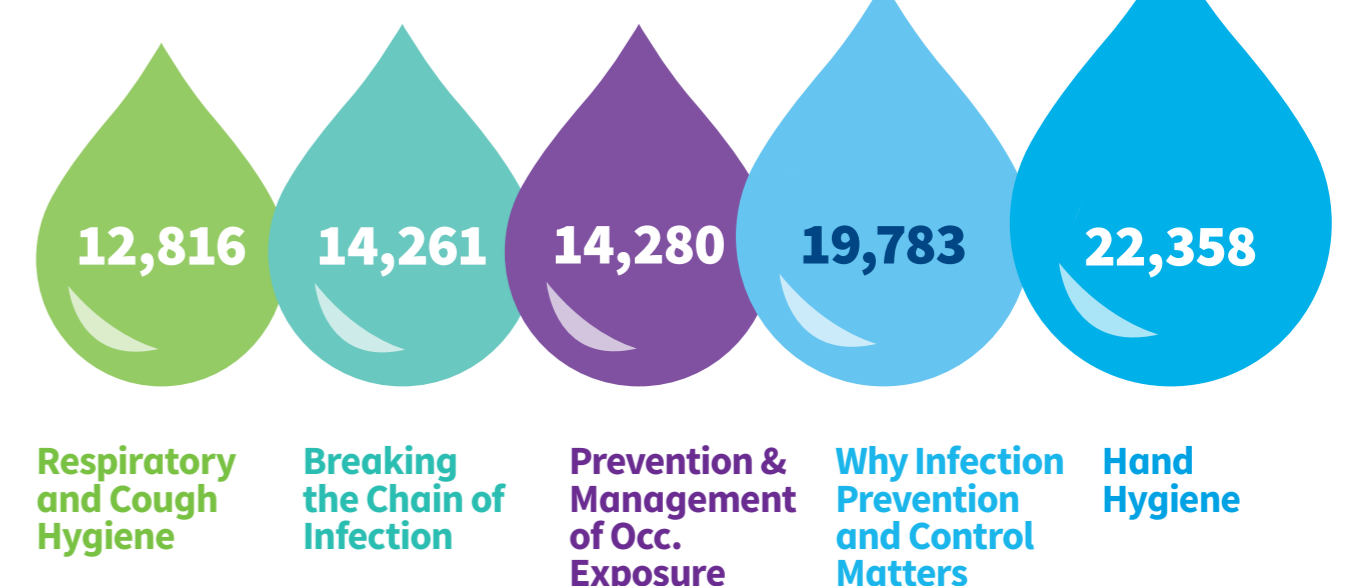
OVER 170,000 MODULE COMPLETIONS

NON-NHS HEALTH AND SOCIAL CARE 1,362

COLLEGES AND UNIVERSITIES 62,554

NHS SCOTLAND 109,806

MOST POPULAR MODULES



555 STAFF FROM DIFFERENT JOB ROLES ENROLLED
EMBEDDED IN EDUCATION STRATEGIES AND INDUCTION PROGRAMMES IN MANY SCOTTISH HEALTH BOARDS
USED IN 31 COLLEGES AND UNIVERSITIES

Features and Benefits

- ✓ Access learning resources 24/7
- ✓ Join the pathway wherever appropriate to you
- ✓ Personalise your learning pathway; it is not a “one size fits all” programme
- ✓ Self-select resources from any layer as appropriate to your job role
- ✓ Use the resources to support your personal development plan and as evidence for your KSF dimensions, professional portfolio and revalidation

6. What do the users say?



Clear, simple, user friendly, not too time consuming. Hits the spot.

Well written, well-illustrated, genuinely interesting and quick to navigate.

7. Next steps – how can we make it better?

- ✓ Focus on more guidance for line managers
- ✓ Evaluation of the first year of the Foundation Layer and implementation of improvement suggestions

SIPCEP is the first infection prevention education pathway developed for staff working in health and social care nationally.

It is hoped that flexible learning for students and staff as appropriate to their role will also have an impact on succession planning for IPC teams.